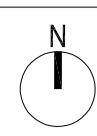


## HPC COMPANY DOCUMENT

# HINKLEY POINT C MATERIAL CHANGE APPLICATION EIA SCOPING REPORT - APPENDIX A PLANS

<b>Revision</b>	02
<b>Date of Issue</b>	16/03/22
<b>Document No.</b>	100977468
<b>Status</b>	S2 - FIT FOR INFORMATION

© Copyright 2022 NNB Generation Company (HPC) Limited. All rights reserved



TEAMCENTER NUMBER  
**100969260**

STATUS  
**P1**

- NUCLEAR ISLAND**
- 01 REACTOR BUILDING
  - 02 FUEL BUILDING
  - 03 SAFEGUARD BUILDING
  - 04 SAFEGUARD BUILDINGS
  - 05 NUCLEAR AUXILIARY BUILDING
  - 06 ACCESS TOWER
  - 07 FUEL BUILDING HALL
  - 08 BORON STORAGE
  - 09 RADIOACTIVE WASTE STORAGE BUILDING
  - 10 RADIOACTIVE WASTE PROCESS BUILDING
  - 11 RADIOACTIVE WASTE TREATMENT BUILDING (UNIT 2)
  - 12 HOT LAUNDRY
  - 13 HOT WORKSHOP, HOT WAREHOUSE, FACILITIES FOR DECONTAMINATION
  - 14 EFFLUENT TANKS + REFUELLING WATER TANKS
  - 15 EMERGENCY DIESEL GENERATORS
  - 16 COOLING WATER DISCHARGE WEIR (BUILDINGS)
  - 17 UNDERGROUND TUNNEL HIGHPOINT
  - 18 BATTERY LOAD BANKS
- CONVENTIONAL ISLAND**
- 19 TURBINE HALL & SKYBRIDGES
  - 20 NON-CLASSIFIED ELECTRICAL BUILDING
  - 21 GAS INSULATED SWITCH GEAR
  - 22 MAIN TRANSFORMER
  - 23 UNIT TRANSFORMER
  - 24 AUXILIARY TRANSFORMER
  - 25 HYDRAZINE STORAGE
- OPERATIONS**
- 26 OPERATIONAL SERVICE CENTRE
- COOLING WATER PUMPHOUSE & ASSOCIATED BUILDINGS**
- 27 COOLING WATER PUMPHOUSE
  - 28 FOREBAY
  - 29 OUTFALL POND (SURGE CHAMBER)
  - 30 FILTERING DEBRIS RECOVERY PIT
  - 31 FIRE-FIGHTING WATER BUILDING
  - 32 DISCHARGE SHAFT
- REMAINING BALANCE OF PLANT & OTHER PLANT**
- 33 DEMINERALISATION STATION
  - 34 AUXILIARY BOILERS
  - 35 HYDROGEN STORAGE
  - 36 OXYGEN STORAGE
- ANCILLARY, OFFICE & STORAGE**
- 37 CHEMICAL PRODUCTS STORAGE
  - 38 SEWAGE TREATMENT PLANT
  - 39 CONVENTIONAL ISLAND WATER STORAGE TANK
  - 40 NUCLEAR ISLAND WATER STORAGE TANK
  - 41 DEGASSED WATER STORAGE TANKS
  - 42 INTERIM SPENT FUEL STORE (ISFS)
  - 43 EQUIPMENT STORAGE (FOR ISFS)
  - 44 INTERMEDIATE LEVEL WASTE INTERIM STORAGE FACILITY
  - 45 MAIN ACCESS CONTROL BUILDING
  - 46 EMERGENCY RESPONSE ENERGY CENTRE
  - 47 OFF SITE DELIVERY CHECKPOINT
  - 48 AUXILIARY ADMINISTRATION BUILDING
  - 49 EMERGENCY RESPONSE CENTRE
  - 50 GARAGE FOR HANDLING FACILITIES
  - 51 OIL & GREASE STORAGE + OIL ANCILLARY BUILDING
  - 52 AREVA WAREHOUSE
  - 53 RAW WATER AND POTABLE WATER SUPPLY
- PUBLIC & TRAINING**
- 54 SIMULATOR BUILDING / TRAINING CENTRE
  - 55 OUTAGE ACCESS CONTROL BUILDING
  - 56 CONTAMINATED TOOLS STORAGE
  - 57 CONVENTIONAL WASTE STORAGE
  - 58 TRANSIT AREA FOR VERY LOW LEVEL WASTE AND LOW LEVEL WASTE
  - 59 BACKUP EMERGENCY EQUIPMENT STORE
  - 60 SERVICE ACCESS BUILDINGS
  - 61 SERVICES VENTILATION BUILDING
- NATIONAL GRID SUBSTATION**
- 62 NATIONAL GRID SUBSTATION
- OTHER SITE STRUCTURES**
- 63 PUBLIC INFORMATION CENTRE
  - 64 NATIONAL GRID SUBSTATION
  - 65 HINKLEY POINT SUBSTATION
  - 66 SEA WALL (INCORPORATING COASTAL FOOTPATH)
  - 67 CAR PARK
  - 68 METEOROLOGICAL STATION MAST AND COMPOUND
  - 69 EDF ENERGY PYLON
  - 70 VALVE ROOM FOR DEMINERALISATION STATION
  - 71 BACK-UP CONTAINERISED GENERATORS
  - 72 SLUICE GATE STORAGE

**DRAWING SYMBOLS & LEGEND**

- HINKLEY POINT C DEVELOPMENT SITE BOUNDARY (DCO)
- HINKLEY POINT C PERMANENT DEVELOPMENT SITE BOUNDARY
- TEMPORARY JETTY SEAWARD HARBOUR LIMITS
- BUILDINGS / STRUCTURES
- NATIONAL GRID 400KV PYLONS & LINES (SEE CAVEAT BELOW)
- EMBANKMENT
- PYLONS & LINES - EDF ENERGY STANDARD
- RAILWAY TRACKS
- FENCES
- PARAMETER BUILDINGS
- RAINWATER CHANNEL

**THE OVERHEAD LINES AND TOWER (PYLON) POSITIONS ILLUSTRATED ON THIS PLAN ARE INDICATIVE. NATIONAL GRID PROPOSALS FOR THESE OVERHEAD LINES AND PYLONS ARE SUBJECT TO A SEPARATE DCO APPLICATION REF. EN020001**

**REACTOR CENTRELINES OS CO-ORDINATES**

UNIT 1	320369E	145812N	NOTE: ALL CO-ORDINATES ARE IN METRES AND ARE BASED ON THE ORDNANCE SURVEY NATIONAL GRID
UNIT 2	320139E	145812N	

REVISION	DATE	DRAWN	CHECKED	REASONS FOR REVISION/ COMMENTS	APPROVED
05	JAN 2022	ATK	ATK	PERMANENT DEVELOPMENT DCO CHANGE SUBMISSION	NNB
04	JUNE 2021	NNB	NNB	PERMANENT DEVELOPMENT DCO CHANGE SUBMISSION	NNB
03	SEPT 2017	NNB	NNB	PERMANENT DEVELOPMENT DCO CHANGE SUBMISSION	NNB
02	NOV 2014	NNB	NNB	PERMANENT DEVELOPMENT DCO CHANGE SUBMISSION	NNB
01	SEPT 2011	YRM	YRM	FOR IPC SUBMISSION	NNB

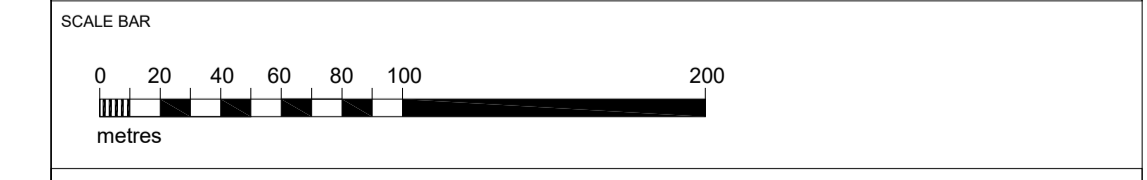


DRAWING TITLE  
**Hinkley Point C Development Site  
HPC Permanent Development Site**

**Site layout Plan (Operational)  
Regulation 5(2)(o)**

PROJECT DRAWING REFERENCE NO. <b>HINK-A1-SL-00-GA-010</b>	REVISION <b>05</b>	SCALE <b>1:2500 @ A1</b>	DATE <b>JAN 2022</b>
--	-----------------------	-----------------------------	-------------------------

DOCUMENT  
**DCO Change Application Drawing - Detail (for Approval)**



DRAWING SECURITY CLASSIFICATION

- PROTECTIVE MARKING REQUIRED
- NOT PROTECTIVELY MARKED

**SITE LAYOUT PLAN  
SCALE 1:2500**

**HPC PERMANENT DEVELOPMENT SITE LOCATION PLAN  
SCALE 1:10000**



TEAMCENTER NUMBER	STATUS
100969261	P1

Ref.	Building	Siting Parameter
1	Nuclear Island	
2	Reactor Building	
3	Fuel Building	
4	Safeguard Buildings	
5	Nuclear Auxiliary Building	
6	Access Tower	
7	Fuel Building Hall	
8	Boron Storage	
9	Radioactive Waste Storage Building	
10	Radioactive Waste Process Building	
11	Radioactive Waste Treatment Building (Unit 2)	
12	Hot Laundry	
13	Hot Workshop, Hot Warehouse, Facilities For Decontamination	
14	Effluent Tanks - Refueling Water Storage Tank	+/- 3m south
15	Emergency Chemical Generators	
16	Cooling Water Discharge Vessels (Buildings)	
17	Underground Tunnel Highpoints	
18	Battery Load Banks	+/- 5m in any direction
19	Conventional Island	
20	Turbine Hall & Sky Bridges	
21	Non-Classified Electrical Building	
22	Main Transformer	
23	Unit Transformer	
24	Auxiliary Transformer	
25	Hydraulic & Airborne Storage	+/- 3m south
26	Operations	
27	Operational Service Centre	+/- 3m in any direction
28	Cooling Water Pump House & Associated Buildings	
29	Cooling Water Pump House	
30	Forebay	
31	Outlet Pond (Surge Chamber)	
32	Filling/Drain Recovery Pit	
33	Fire-Fighting Water Building	
34	Discharge Shaft	+/- 5m in any direction
35	Remaining Balance Of Plant & Other Plant	
36	Demineralisation Station	
37	Auxiliary Boiler	
38	Hydrogen Storage	
39	Charged Storage	
40	Chemical Products Storage	
41	Sewage Treatment Plant	
42	Conventional Island Water Storage Tank	+/- 5m in any direction
43	Nuclear Island Water Storage Tank	
44	Decontamination Water Storage Tanks	+/- 5m in any direction
45	Fuel & Waste Storage	
46	Interim Spent Fuel Store (ISFS)	+/- 5m in any direction
47	Equipment Storage For Interim Spent Fuel Store	+/- 3m in any direction
48	Interim Level Waste Interim Storage Facility	+/- 3m in any direction
49	Auxiliary Office & Storage	
50	Main Access Control Building	
51	Emergency Response Energy Centre	
52	Off Site Delivery Checkpoint	
53	Auxiliary Administration Building	
54	Emergency Response Centre	
55	Storage For Handling Facilities	
56	Oil & Grease Storage - Oil Auxiliary Building	
57	Area Warehouse	
58	Raw Water And Potable Water Supply	
59	Outage Access Control Building	
60	Containerised Fuel Storage	
61	Conventional Waste Storage	
62	Transfer Area For Very Low Level Waste & Low Level And Low Level Waste	+/- 5m in any direction
63	Backup Emergency Equipment Store	+/- 15m south and +/- 5m north, east or west
64	Service Access Buildings	+/- 10m in any direction
65	Service Validation Building	
66	Public & Training	
67	Simulation Building / Training Centre	
68	Public Information Centre	+/- 5m in any direction
69	National Grid Substation	
70	National Grid Substation	+/- 5m in any direction
71	Other Site Structures	
72	Hinkley Point Substation	
73	Car Park	As indicated on Landscape Scheme
74	Metastore/Storage Mast and Compound	+/- 6m to a north direction, +/- 6m to a east direction, +/- 3m to a west direction, +/- 4.4m to a south direction
75	EDF Energy Pylon	+/- 5m in any direction
76	Water Pylon for Demineralisation Station	
77	Back-up Containerised Generators	+/- 5m in any direction
78	Sludge Gate Storage	+/- 5m in any direction

DRAWING SYMBOLS & LEGEND			
[Symbol]	MAXIMUM BUILDING FOOTPRINT	[Symbol]	PYLONS & LINES - EDF ENERGY STANDARD
[Symbol]	MINIMUM BUILDING FOOTPRINT	[Symbol]	RAILWAY TRACKS
[Symbol]	PARAMETER PLAN BUILDINGS	[Symbol]	FENCES
[Symbol]		[Symbol]	HINKLEY POINT C PERMANENT DEVELOPMENT SITE BOUNDARY

THE MAXIMUM BUILDING HEIGHT FOR BUILDINGS / STRUCTURES COMPRISES THE ROOF HEIGHT STATED ON THIS DRAWING AND AN ADDITIONAL 1M TO TAKE ACCOUNT OF ANY ADDITIONAL ROOF PLANT OR MACHINERY THAT MAY PROTRUDE ABOVE THE STATED ROOF HEIGHT. (SEE HPC DESIGN AND ACCESS STATEMENT, CHAPTER 19 FOR DETAILS).

REV	DATE	BY	CHKD	DESCRIPTION	APPROVED
06	JAN 2022	ATK	ATL	PERMANENT DEVELOPMENT DCO CHANGE SUBMISSION	NMB
04	JUNE 2021	NMB	NMB	PERMANENT DEVELOPMENT DCO CHANGE SUBMISSION	NMB
03	SEPT 2017	NMB	NMB	PERMANENT DEVELOPMENT DCO CHANGE SUBMISSION	NMB
02	NOV 2016	NMB	NMB	PERMANENT DEVELOPMENT DCO CHANGE SUBMISSION	NMB
01	SEPT 2015	NMB	NMB	HPC PFC SUBMISSION	NMB

REVISION: DATE DRAWN CHECKED REASON FOR REVISION COMMENTS APPROVED

DRAWING TITLE  
**Hinkley Point C Development Site**  
**HPC Permanent Development Site**

HPC Site Parameter Plan  
 Regulation 5(2)(c)

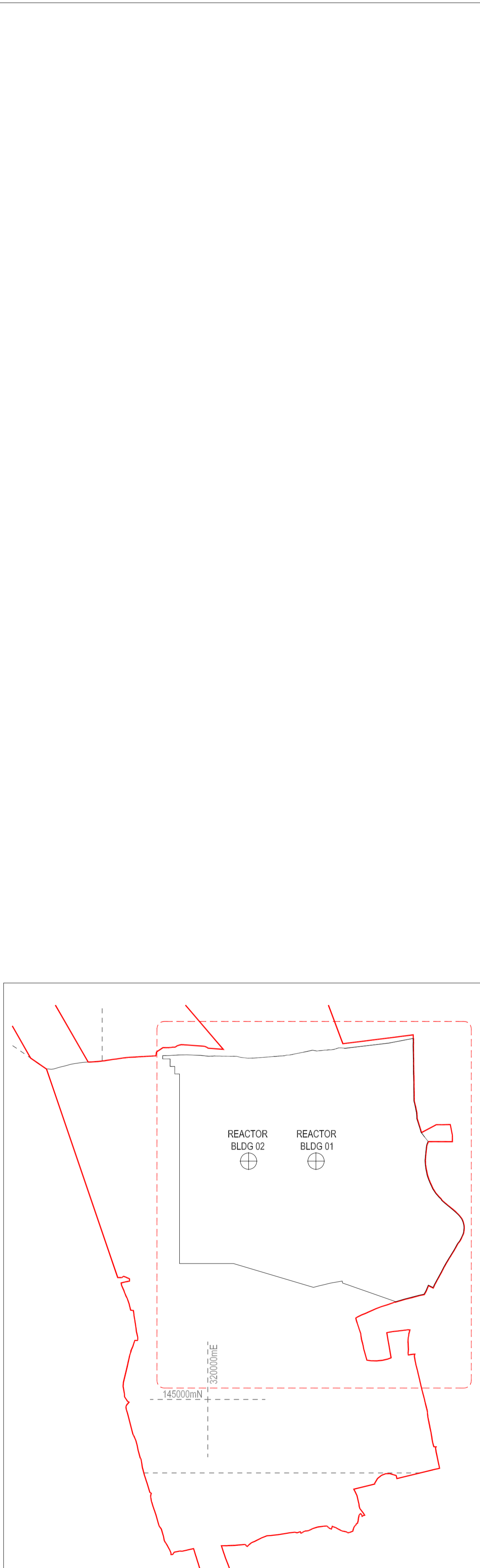
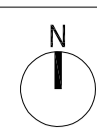
PROJECT DRAWING REFERENCE NO: HINK-A1-SL-00-GA-002 REVISION: 05 SCALE: 1:1000 @ A0 DATE: JAN 2022

DOCUMENT  
**DCO Change Application Drawing - Parameters (for Approval)**

SCALE BAR  
 0 10 20 30 40 50 100 METRES

DRAWING SECURITY CLASSIFICATION  
 PROTECTIVE MARKING REQUIRED  
 NOT PROTECTIVELY MARKED

PARAMETERS FOR MAIN SITE  
SCALE 1:1000



**TEAMCENTER NUMBER**  
100968244

**STATUS**  
P1

**NUCLEAR ISLAND**

- 01 REACTOR BUILDING
- 02 FUEL BUILDING
- 03 SAFEGUARD BUILDING
- 04 SAFEGUARD BUILDINGS
- 05 NUCLEAR AUXILIARY BUILDING
- 06 ACCESS TOWER
- 07 FUEL BUILDING HALL
- 08 BORON STORAGE
- 09 RADIOACTIVE WASTE STORAGE BUILDING
- 10 RADIOACTIVE WASTE PROCESS BUILDING
- 11 RADIOACTIVE WASTE TREATMENT BUILDING (UNIT 2)
- 12 HOT LAUNDRY
- 13 HOT WORKSHOP, HOT WAREHOUSE, FACILITIES FOR DECONTAMINATION
- 14 EFFLUENT TANKS + REFUELLING WATER TANKS
- 15 EMERGENCY DIESEL GENERATORS
- 16 COOLING WATER DISCHARGE WEIR (BUILDINGS)
- 17 UNDERGROUND TUNNEL HIGHPOINT
- 18 BATTERY LOAD BANKS

**CONVENTIONAL ISLAND**

- 19 TURBINE HALL & SKYBRIDGES
- 20 NON-CLASSIFIED ELECTRICAL BUILDING
- 21 GAS INSULATED SWITCH GEAR
- 22 MAIN TRANSFORMER
- 23 UNIT TRANSFORMER
- 24 AUXILIARY TRANSFORMER
- 25 HYDRAZINE STORAGE

**OPERATIONS**

- 26 OPERATIONAL SERVICE CENTRE

**COOLING WATER PUMPHOUSE & ASSOCIATED BUILDINGS**

- 27 COOLING WATER PUMPHOUSE
- 28 FOREBAY
- 29 OUTFALL POND (SURGE CHAMBER)
- 30 FILTERING DEBRIS RECOVERY PIT
- 31 FIRE-FIGHTING WATER BUILDING
- 32 DISCHARGE SHAFT

**REMAINING BALANCE OF PLANT & OTHER PLANT**

- 33 DEMINERALISATION STATION
- 34 AUXILIARY BOILERS
- 35 HYDROGEN STORAGE
- 36 OXYGEN STORAGE

**37 CHEMICAL PRODUCTS STORAGE**

- 38 SEWAGE TREATMENT PLANT
- 39 CONVENTIONAL ISLAND WATER STORAGE TANK
- 40 NUCLEAR ISLAND WATER STORAGE TANK
- 41 DEGASSED WATER STORAGE TANKS
- ~~42 INTERIM SPENT FUEL STORE (ISFS)~~
- ~~43 EQUIPMENT STORAGE (FOR ISFS)~~
- 44 INTERMEDIATE LEVEL WASTE INTERIM STORAGE FACILITY
- ANCILLARY OFFICE & STORAGE**
- 45 MAIN ACCESS CONTROL BUILDING
- 46 EMERGENCY RESPONSE ENERGY CENTRE
- 47 OFF SITE DELIVERY CHECKPOINT
- 48 AUXILIARY ADMINISTRATION BUILDING
- 49 EMERGENCY RESPONSE CENTRE
- 50 GARAGE FOR HANDLING FACILITIES
- 51 OIL & GREASE STORAGE + OIL ANCILLARY BUILDING
- 52 AREVA WAREHOUSE
- 53 RAW WATER AND POTABLE WATER SUPPLY
- ~~54 METEOROLOGICAL STATION~~
- 55 OUTAGE ACCESS CONTROL BUILDING
- 56 CONTAMINATED TOOLS STORAGE
- 57 CONVENTIONAL WASTE STORAGE
- 58 TRANSIT AREA FOR VERY LOW LEVEL WASTE AND LOW LEVEL WASTE
- 59 BACKUP EMERGENCY EQUIPMENT STORE
- 60 SERVICE ACCESS BUILDINGS
- 61 SERVICES VENTILATION BUILDING

**PUBLIC & TRAINING**

- 62 SIMULATOR BUILDING / TRAINING CENTRE
- 63 PUBLIC INFORMATION CENTRE

**NATIONAL GRID SUBSTATION**

- 64 NATIONAL GRID SUBSTATION

**OTHER SITE STRUCTURES**

- 65 HINKLEY POINT SUBSTATION
- 66 SEA WALL (INCORPORATING COASTAL FOOTPATH)
- 67 CAR PARK
- 68 METEOROLOGICAL STATION MAST & COMPOUND
- 69 EDF ENERGY PYLON
- 70 VALVE ROOM FOR DEMINERALISATION STATION
- 71 BACK-UP CONTAINERISED GENERATORS
- 72 SLUICE GATE STORAGE

**DRAWING SYMBOLS & LEGEND**

- HINKLEY POINT C DEVELOPMENT SITE BOUNDARY (DCO)
- HINKLEY POINT C PERMANENT DEVELOPMENT SITE BOUNDARY
- TEMPORARY JETTY SEAWARD HARBOUR LIMITS
- BUILDINGS / STRUCTURES
- NATIONAL GRID 400KV PYLONS & LINES (SEE CAVEAT BELOW)
- EMBANKMENT
- PYLONS & LINES - EDF ENERGY STANDARD
- RAILWAY TRACKS
- FENCES
- PARAMETER BUILDINGS
- RAINWATER CHANNEL

**THE OVERHEAD LINES AND TOWER (PYLON) POSITIONS ILLUSTRATED ON THIS PLAN ARE INDICATIVE. NATIONAL GRID PROPOSALS FOR THESE OVERHEAD LINES AND PYLONS ARE SUBJECT TO A SEPARATE DCO APPLICATION REF. EN020001**

**REACTOR CENTRELINES OS CO-ORDINATES**

UNIT 1	320369E	145812N
UNIT 2	320139E	145812N

**NOTE:**  
ALL CO-ORDINATES ARE IN METRES AND ARE BASED ON THE ORDNANCE SURVEY NATIONAL GRID

**TRACKED CHANGES KEY**

- New Building or Structure
- Building or Structure Removed
- Building or Structure Footprint Revised
- Building or Structure Moved

REVISION	DATE	DRAWN	CHECKED	REASONS FOR REVISION/ COMMENTS	APPROVED
01	JAN 2022	ATK	ATK	PERMANENT DEVELOPMENT DCO CHANGE SUBMISSION	NNB

**HinkleyPointC**  
Helping Britain Achieve Net Zero

**EDF** **CGN**

**DRAWING TITLE**  
Hinkley Point C Development Site  
HPC Permanent Development Site

**Site layout Plan - Tracked Changes Regulation 5(2)(o)**

**PROJECT DRAWING REFERENCE NO.**  
HINK-A1-SL-00-GA-011

**REVISION**  
01

**SCALE**  
1:2500 @ A1

**DATE**  
JAN 2022

**DOCUMENT**  
Proposed revisions to DCO Site Layout Plan to be submitted for approval

**SCALE BAR**  
0 20 40 60 80 100 200 metres

**DRAWING SECURITY CLASSIFICATION**

- PROTECTIVE MARKING REQUIRED
- NOT PROTECTIVELY MARKED

**HPC PERMANENT DEVELOPMENT SITE LOCATION PLAN**  
SCALE 1:10000

**SITE LAYOUT PLAN**  
SCALE 1:2500

**DRAWING SYMBOLS & LEGEND**

	HINKLEY POINT C DEVELOPMENT SITE BOUNDARY (DCO)		RAILWAY TRACKS
	HINKLEY POINT C PERMANENT DEVELOPMENT SITE BOUNDARY		FENCES
	TEMPORARY JETTY SEAWARD HARBOUR LIMITS		OVERHEAD LINES
	TYPE 01 PAVING		GRASSLAND
	TYPE 02 PAVING		MEADOW
	TYPE 03 PAVING		BRIDGWATER BAY
	ASPHALT		HEDEGROW
	GRAVEL		GREEN ROOF
	EMBANKMENT 1:2		TREES
	NATIONAL GRID 400KV PYLON LINES (SEE CAVEAT BELOW)		PYLONS & LINES - EDF ENERGY STANDARD

THE OVERHEAD LINES AND TOWER (PYLON) POSITIONS ILLUSTRATED ON THIS PLAN ARE INDICATIVE. NATIONAL GRID PROPOSALS FOR THESE OVERHEAD LINES AND PYLONS ARE SUBJECT TO A SEPARATE DCO APPLICATION REF. EN20001

REPRODUCED FROM ORDNANCE SURVEY MAP WITH THE PERMISSION OF ORDNANCE SURVEY ON BEHALF OF THE CONTROLLER OF HER MAJESTY'S STATIONERY OFFICE © CROWN COPYRIGHT (2011). ALL RIGHTS RESERVED. NNB GEN/000490

**REACTOR CENTRELINE OR CO-ORDINATES**

UNIT 1	320399.3912mE	NOTE:	ALL CO-ORDINATES ARE IN METRES AND ARE BASED ON THE ORDNANCE SURVEY NATIONAL GRID
UNIT 2	145812.1430mN		
UNIT 2	320199.3912mE		
UNIT 2	145812.1430mN		

HINKLEY POINT A

HINKLEY POINT B

GREEN LANE

C182 (WICK MOOR DRIVE)

THE OVERHEAD LINES AND TOWER (PYLON) POSITIONS ILLUSTRATED ON THIS PLAN ARE INDICATIVE NATIONAL GRID PROPOSALS FOR THESE OVERHEAD LINES AND PYLONS ARE SUBJECT TO A SEPARATE DCO APPLICATION REF.EN020001

06	FEB 2022	ATK	ATK	TO SUPPORT A DO UPDATE	NMB
04	JUNE 2020	GA	GA	TO SUPPORT A DO UPDATE	NMB
03	SEPT 2017	GA	GA	DOO UPDATE	NMB
02	NOV 2014	GA	GA	PERMANENT DEVELOPMENT DCO CHANGE SUBMISSION	NMB
01	SEPT 2011	YSM	YSM	FOR IPC SUBMISSION	NMB
REVISION	DATE	DRAWN	CHECKED	REASONS FOR REVISION COMMENTS	APPROVED



HINKLEY POINT C

**DRAWING TITLE**  
Hinkley Point C Development Site Proposed Masterplan

**HPC Development Site - Masterplan Regulation 5(2)(o)**

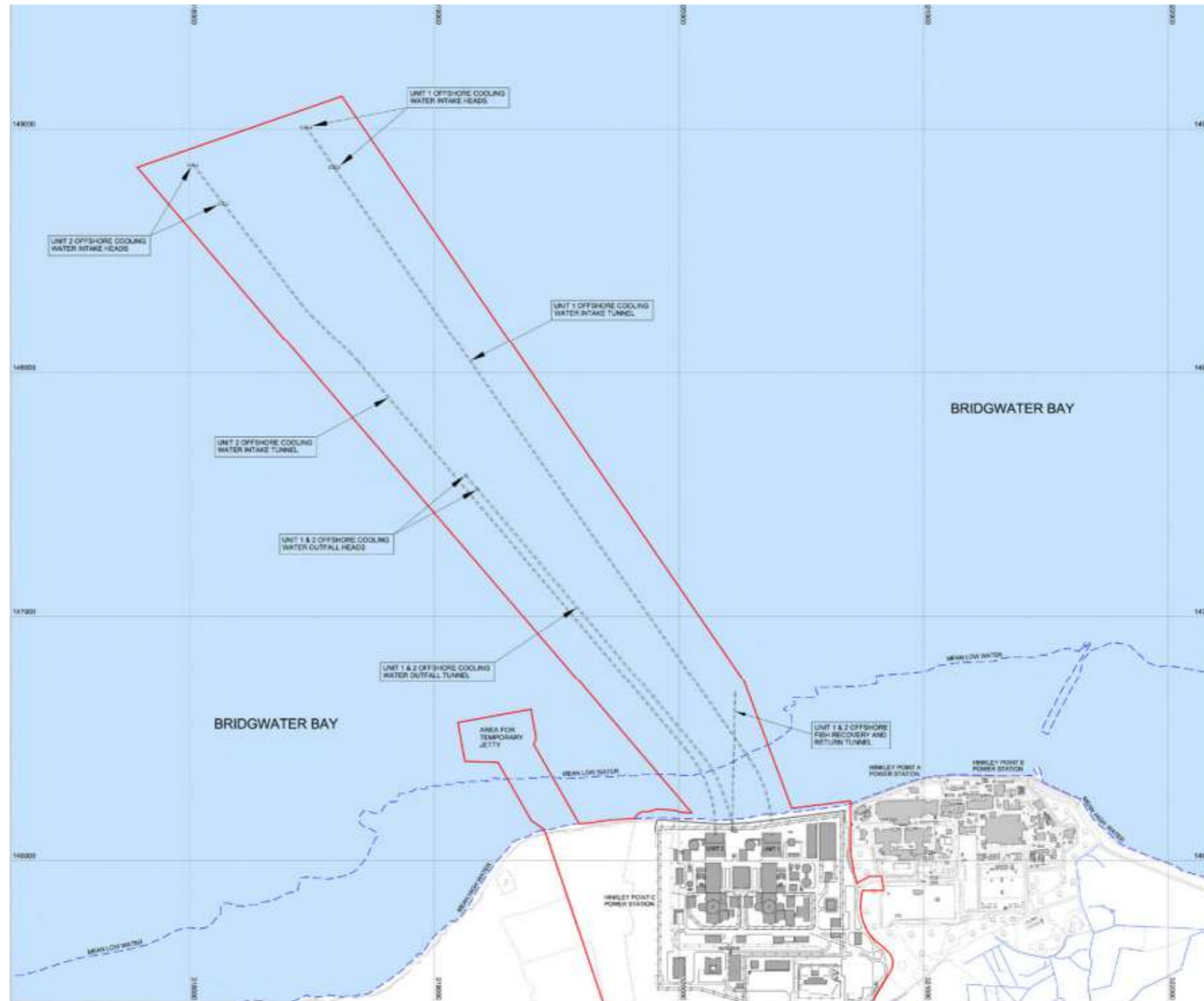
PROJECT DRAWING REFERENCE NO: HINK-A1-MP-00-GA-001

REVISION: 05 SCALE: 1:2500 @ A0 DATE: FEB 2022

DOCUMENT: DCO Change Application Drawing - Illustrative (not for Approval)

SCALE BAR: 0 20 40 60 80 100 200 metres

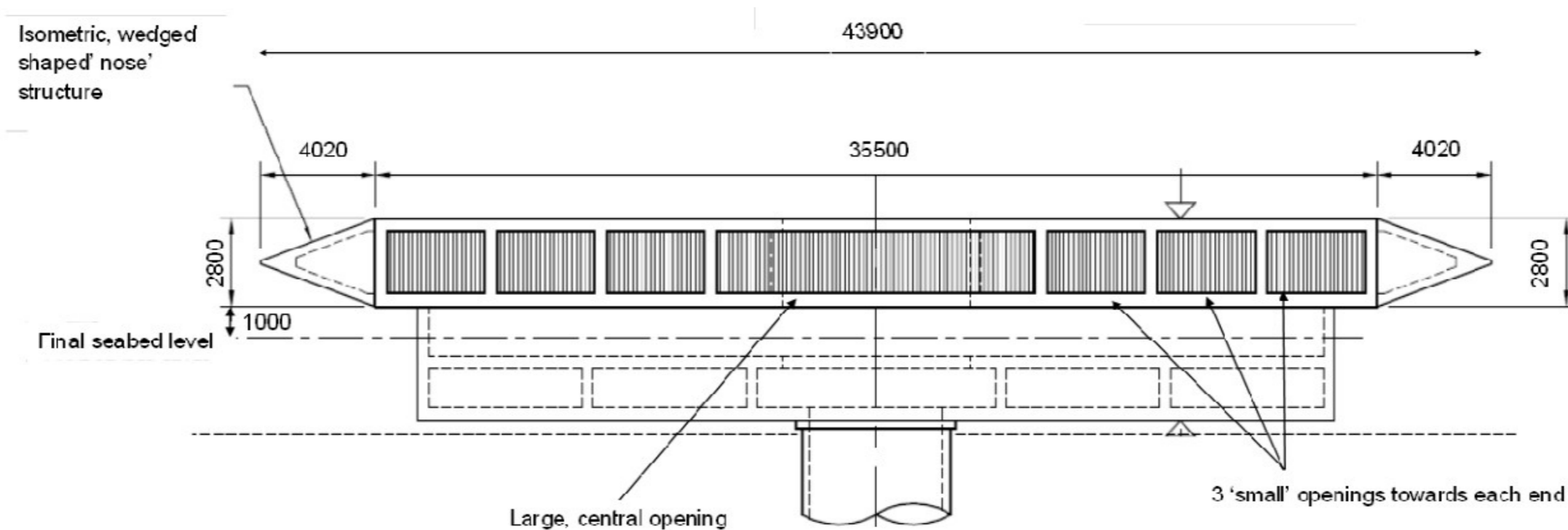
DRAWING SECURITY CLASSIFICATION:  
 PROTECTIVE MARKING REQUIRED  
 NOT PROTECTIVELY MARKED



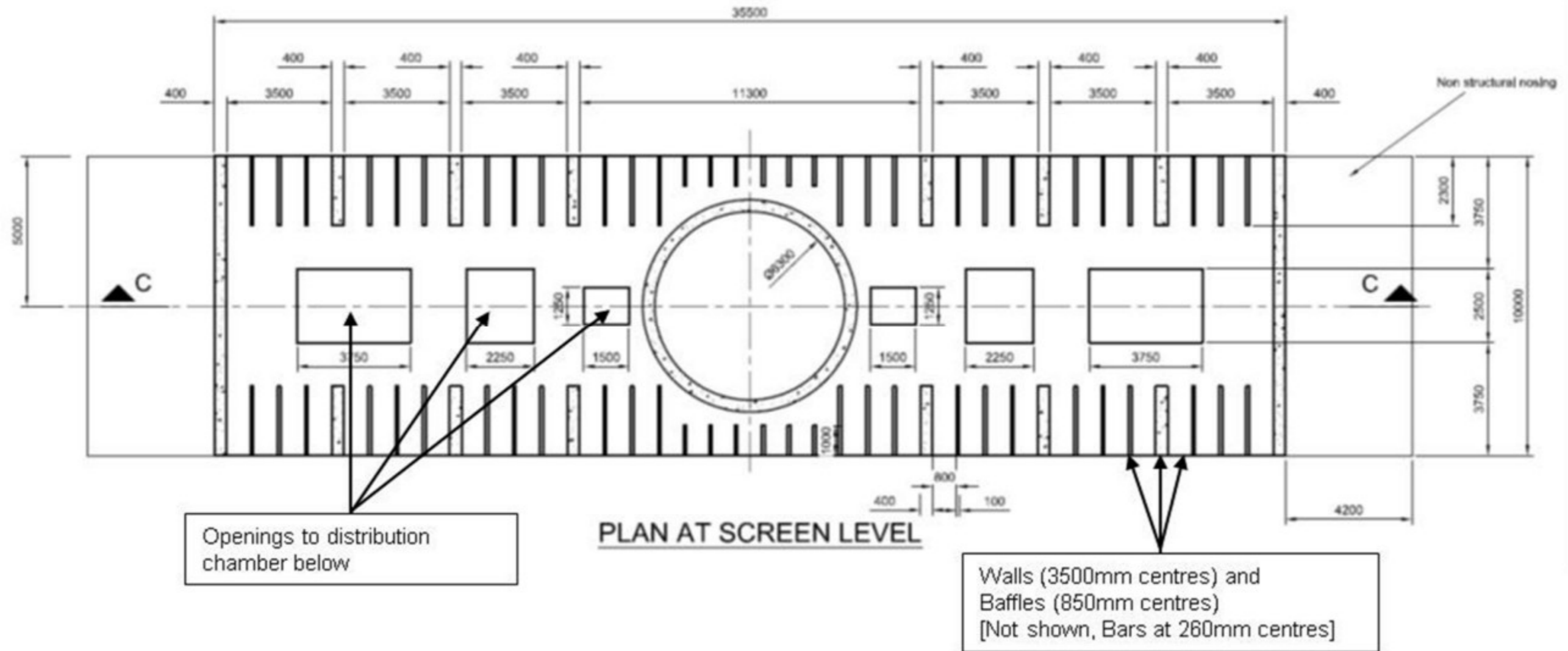
**Plan 1: Locations of the intake headworks and intake tunnels (also showing outfall headworks and tunnels and Fish Return tunnel and outfall**



Plan 2: 3 Dimensional views of the intake heads (Type 1 on the left and Type 2 on the right; only the foundations are different; hydraulic performance are the same for both types)

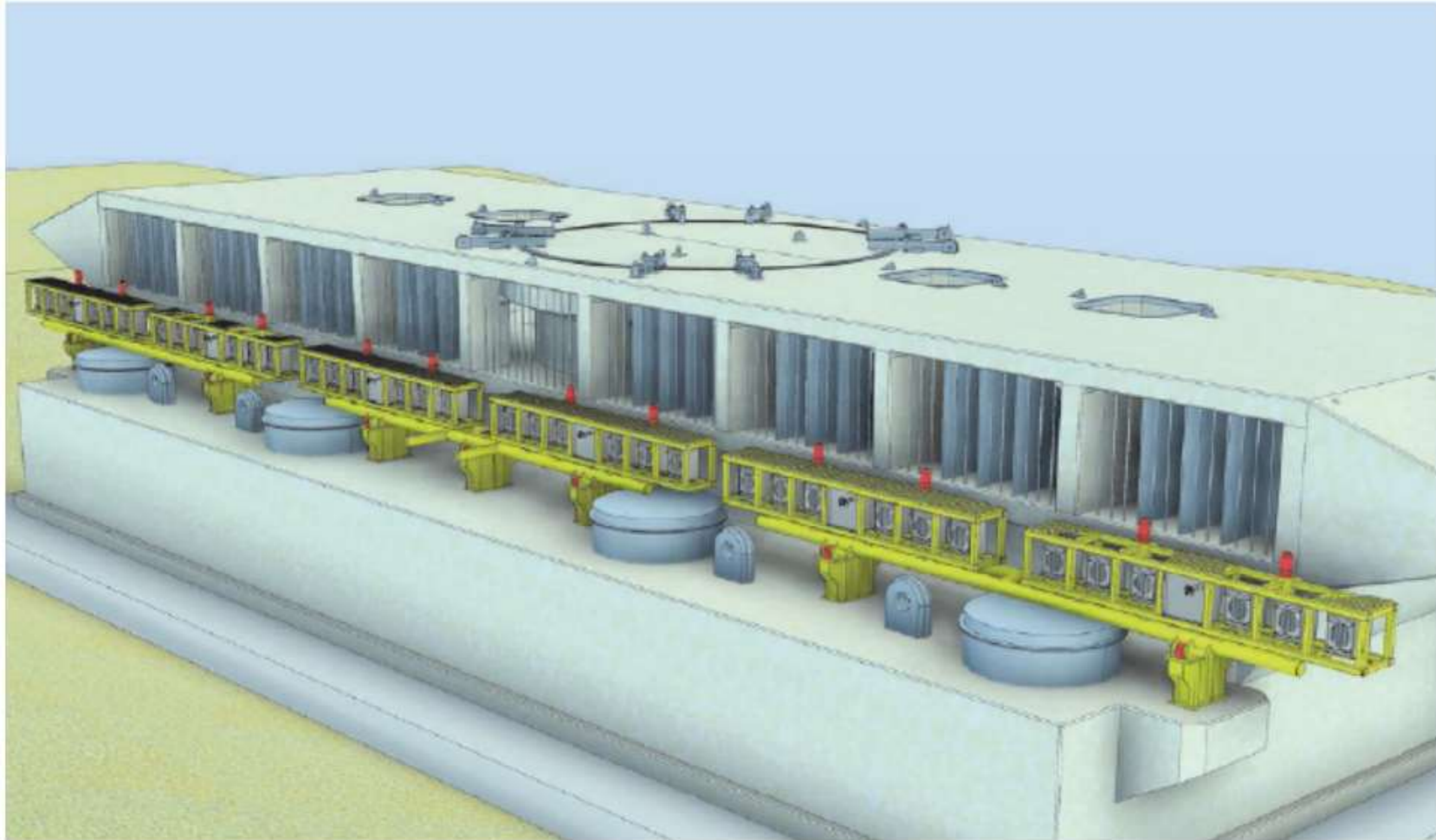


Plan 3: Side view of low velocity, side-entry intake head



Plan 4: Plan view of low velocity, side-entry intake head





**Plan 5: Potential siting of AFD structures as part of the LVSE intake head**